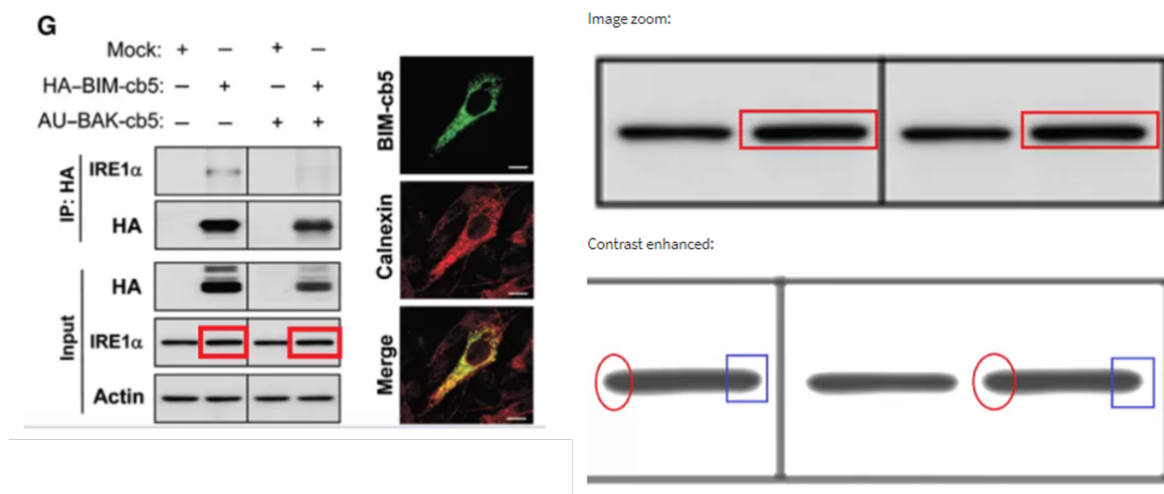


## 1. Publication

Rodriguez DA, Zamorano S, Lisbona F, Rojas-Rivera D, Urra H, Cubillos-Ruiz JR, Armisen R, Henriquez DR, Cheng EH, Letek M, Vaisar T, Irrazabal T, Gonzalez-Billault C, Letai A, Pimentel-Muiños FX, Kroemer G, Hetz C. **BH3-only proteins are part of a regulatory network that control the sustained signalling of the unfolded protein response sensor IRE1 $\alpha$ .** *EMBO J.* 2012 May 16;31(10):2322-35. doi: 10.1038/emboj.2012.84. Epub 2012 Apr 17. PMID: 22510886; PMCID: PMC3364744.

### Pubpeer Comments

Figure 1G: In red, more similar than expected. Unfortunately, the only panel which the raw data is not available in the supplemental material is 1G. Thus, could authors kindly provide the raw data to verify this?



Another issue with this article is that it mentions "data not shown" which is not allowed in EMBO J policies since 2009 (<https://www.embopress.org/doi/full/10.1038/emboj.2009.188>)

"In agreement with these results, no alterations were observed in BIM/PUMA DKO cells in the basal or inducible expression of a variety of essential ER chaperones and foldases that are not regulated by XBP-1 (Lee et al, 2003b), including BiP, ERp57, PDI, ERp72, calreticulin and calnexin (Figure 3D and data not shown)."

EMBO Policies:

"The journal does not permit citation of "Data not shown". All data referred to in the paper should be displayed in the main or Expanded View figures."

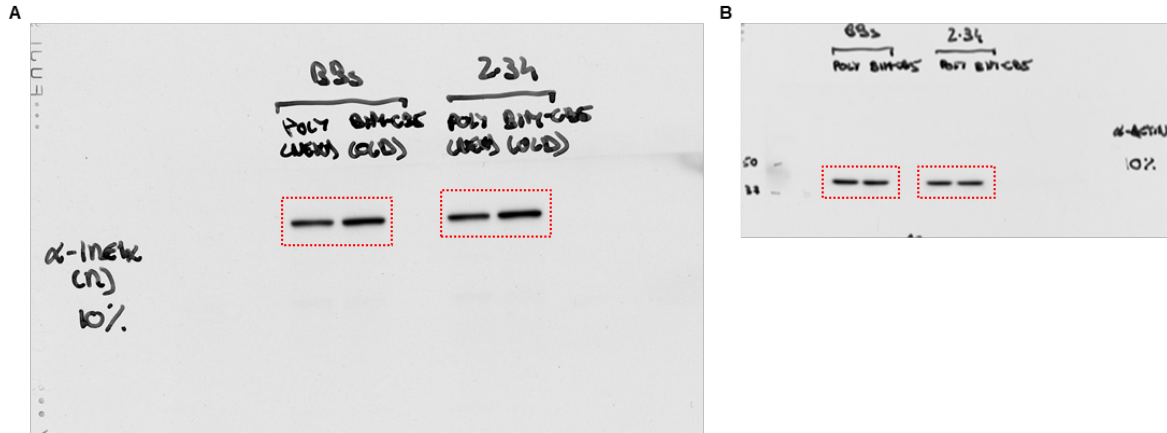
Could authors kindly provide these data?

## 2. Answer

We thank for noticing this issue, nevertheless this is not an error. These experiments were performed by our collaborator in Spain Dr. Felipe Pimentel-Muiños, who provided original

images of this experiment with high resolution. Although they were very similar in shape but not identical, they were correct (Figure 1). However, **we have provided raw data to the EMBO J Journal for transparency (see email at the bottom) and they concluded that the bands are different. No further actions are needed.** We have posted raw data to PubPeer and EMBO J.

Regarding policy of data now shown, we apologize for that since it was not detected by us or the editors of EMBO J. Showing this data was not relevant for the story and could be simply omitted. However, we requested the first author to provide data if available to reply these specific query.



**Figure 1. (A)** Raw data and band selection of the IRE1 input blot of Figure 1G. **(B)** Raw data and band selection of the actin blot of Figure 1G.

### Correction

A correction has been file to indicate undeclared splicing of one RT-PCR providing raw data showing that the experiment was properly performed and a non-declared duplication of a loading control of an experiment split in two figures:

<https://www.embopress.org/doi/full/10.15252/emj.2021109146>

## Email to Editor EMBO J

Correo de Universidad de Chile - about Rodriguez et al 2012 EMBOJ and also 2003

22-02-21 15:30



Claudio Hetz <chetz@uchile.cl>

---

### about Rodriguez et al 2012 EMBOJ and also 2003

---

Claudio Hetz <chetz@uchile.cl>

25 de enero de 2021, 12:28

Para: The EMBO Journal <contact@embojournal.org>, The EMBO Journal <e.boxheimer@embojournal.org>

Cc: Claudio Hetz <chetz@uchile.cl>, "Soto Jara, Claudio" <claudio.soto@uth.tmc.edu>, Diego Rodriguez <rodriguezdr@gmail.com>, fxp@usal.es

Dear Erika


As requested here I am including the response to the Pubpeer comment on Dr Diego Rodriguez Paper 2012. These experiments were performed by our collaborator in Spain Dr Felipe Pimentel Muiños (cc here). When the comment was published by Pubpeer, we immediately contacted his laboratory and they provided high resolution images of original films. We concluded that there was no duplication and decided that no further actions were required. If you need the original scans, Dr Pimentel could submit them directly to you through "We transfer" since they are very heavy.

Also, there was an additional comment on an old paper together with Claudio Soto 2003 (CC here). We were able to identify a backup ppt file on a harddrive with the human brain sample study. We realized that there were different loading controls from different membranes since we blot for many ER stress markers in parallel with combination of samples. The correct tubulin blot is provided here. Since these are qualitative experiments, the conclusions of the study remain the same. We will upload these answers to Pubpeer for full transparency. Data is from 18 years ago and no original films are available as you will expect. The Serono Institute shut down many years ago and Dr Soto's lab moved to the US also.

I hope this information clarifies these issues  
Sincerely yours,

Claudio Hetz

---

 Information for EMBO about artilces 2011 and 2003.pptx  
18677K