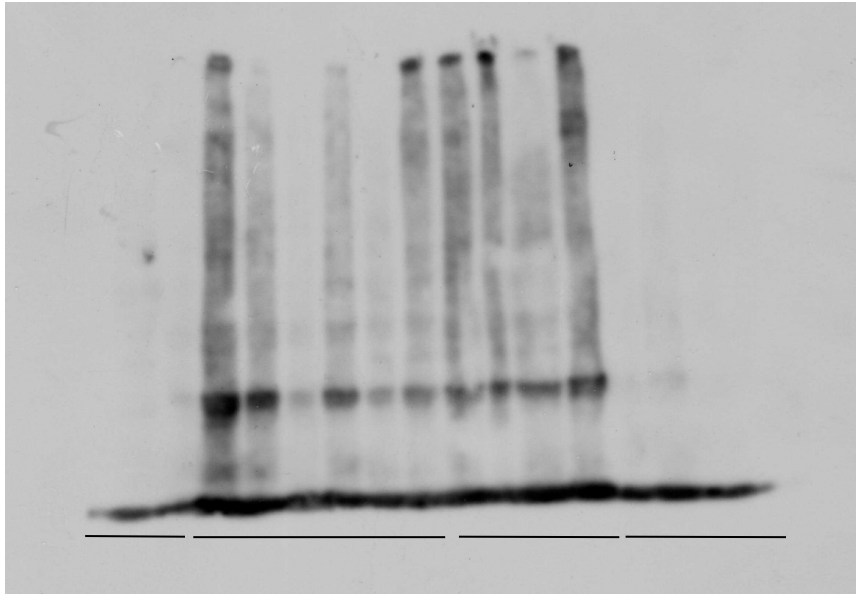


**FIGURE 2 C**

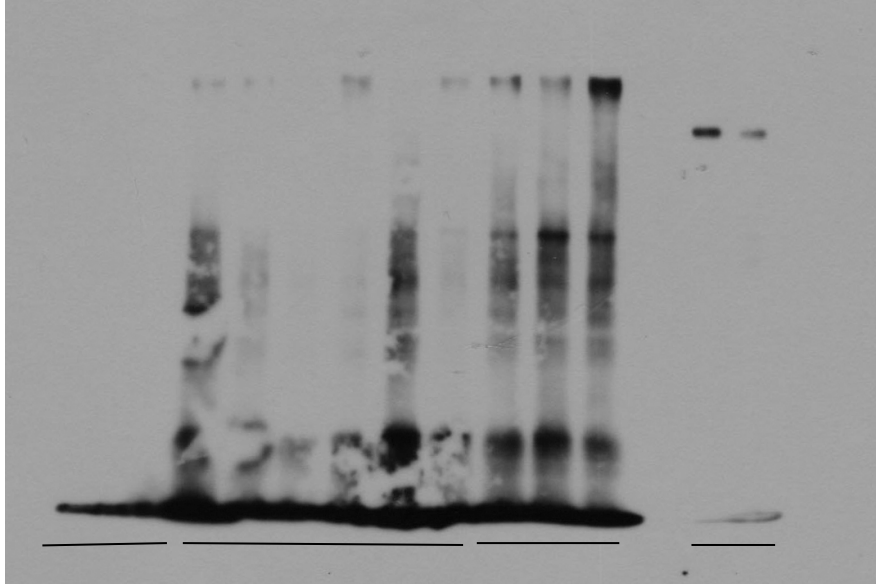
Anti-SOD1,  
Spinal Cord Tissue  
-DTT



ATF4<sup>+/+</sup> Non Tg      ATF4<sup>+/+</sup> SOD1<sup>G86R</sup>      ATF4<sup>-/-</sup> SOD1<sup>G86R</sup>      ATF4<sup>-/-</sup> Non Tg

**FIGURE 2 D**

Anti-SOD1,  
Brain Cortex Tissue  
-DTT

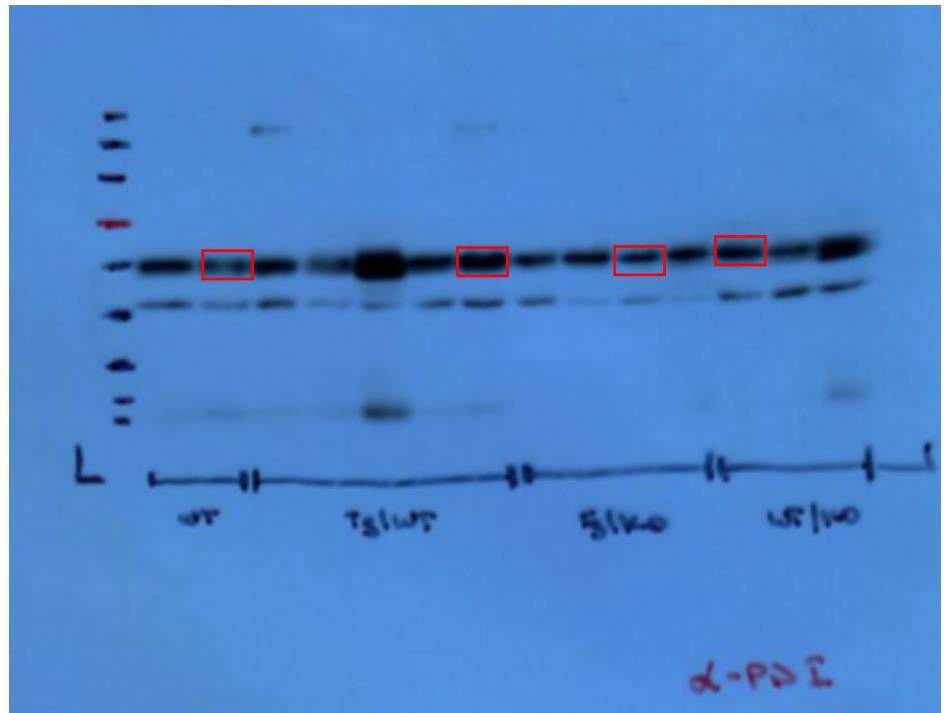


ATF4<sup>+/+</sup> Non Tg      ATF4<sup>+/+</sup> SOD1<sup>G86R</sup>      ATF4<sup>-/-</sup> SOD1<sup>G86R</sup>      + - NSC34 Cells

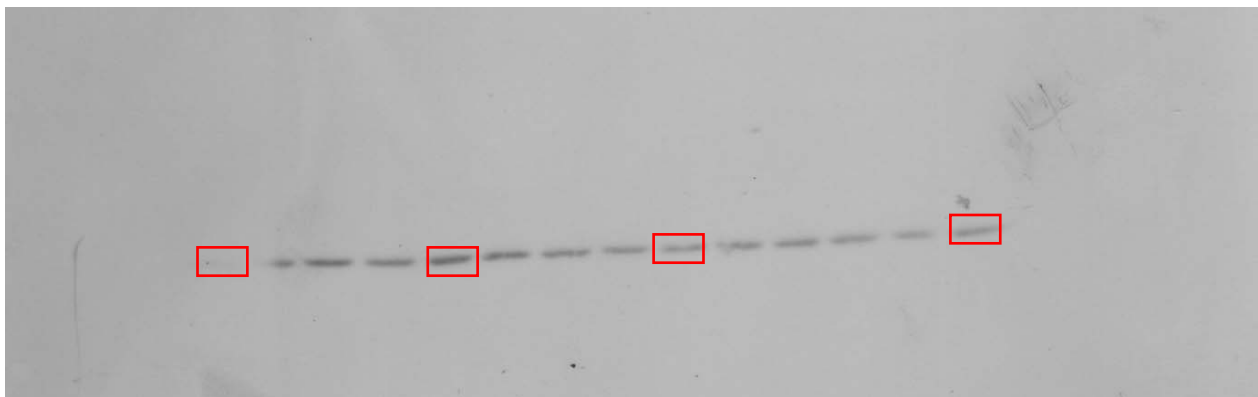
Tunicamycin

**FIGURE 3 A**

Anti-PDI,  
Spinal Cord Tissue  
+DTT



Anti-BIP,  
Spinal Cord Tissue  
+DTT



ATF4<sup>+/+</sup>  
Non Tg

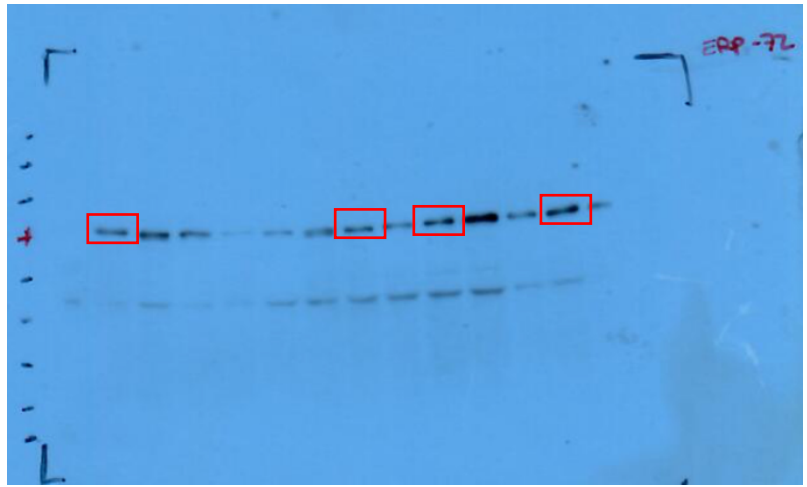
ATF4<sup>+/+</sup>  
SOD1<sup>G86R</sup>

ATF4<sup>-/-</sup>  
SOD1<sup>G86R</sup>

ATF4<sup>-/-</sup>  
Non Tg

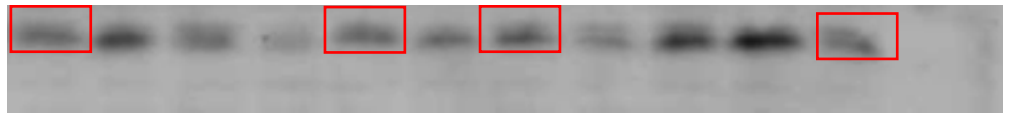
### FIGURE 3 A

Anti-ERp72,  
Spinal Cord Tissue  
+DTT



ATF4<sup>+/+</sup> Non Tg    ATF4<sup>+/+</sup> SOD1<sup>G86R</sup>    ATF4<sup>-/-</sup> SOD1<sup>G86R</sup>    ATF4<sup>-/-</sup> Non Tg

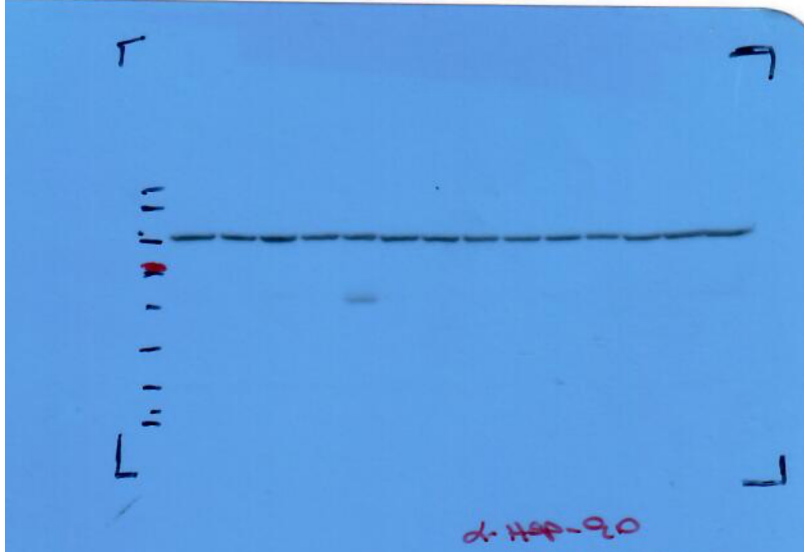
Anti-ERp57,  
Spinal Cord Tissue  
+DTT



ATF4<sup>+/+</sup> Non Tg    ATF4<sup>+/+</sup> SOD1<sup>G86R</sup>    ATF4<sup>-/-</sup> SOD1<sup>G86R</sup>    ATF4<sup>-/-</sup> Non Tg

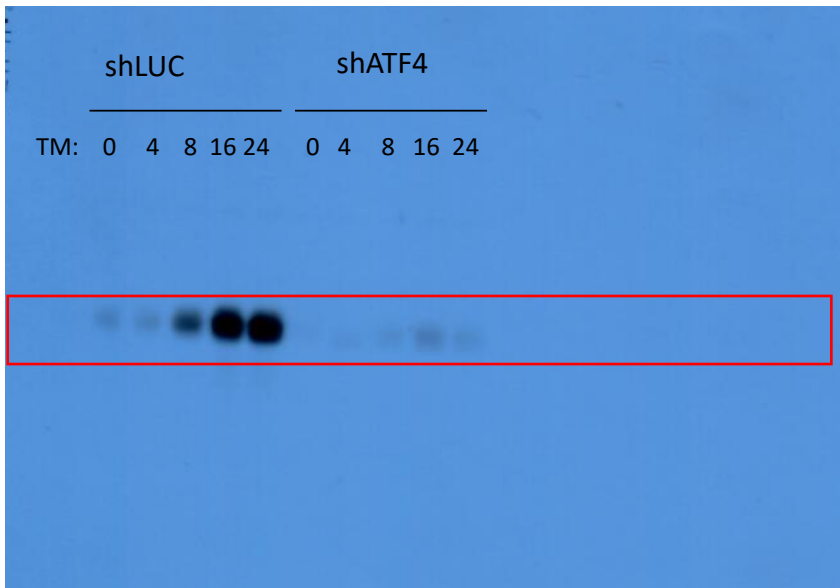
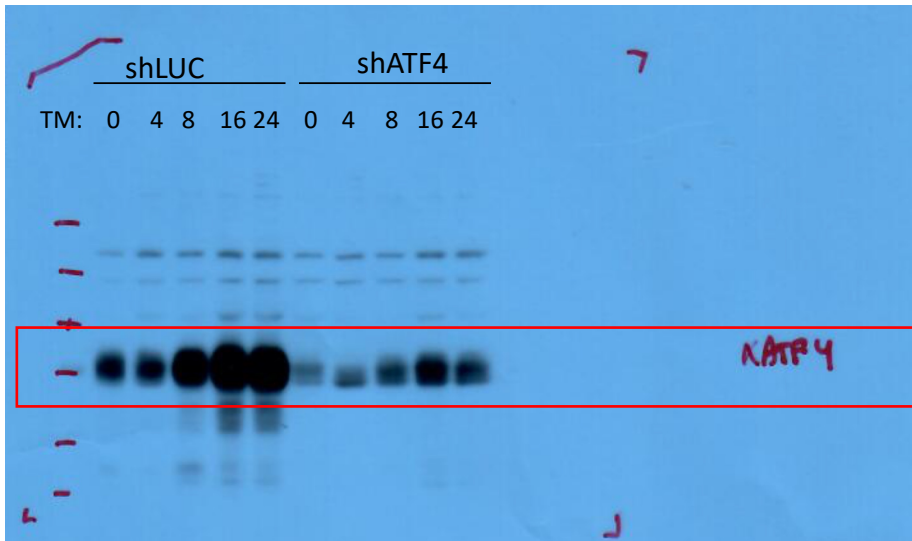
**FIGURE 3 A**

Anti-HSP90,  
Spinal Cord Tissue  
+DTT



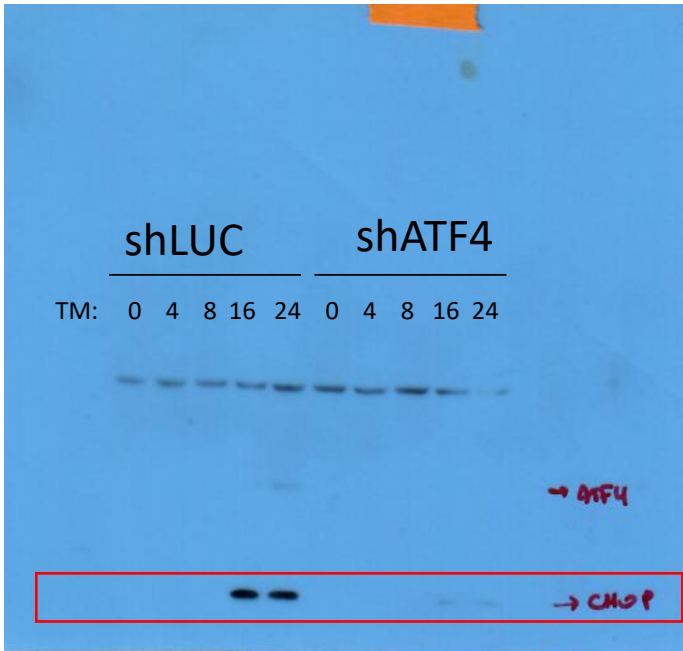
# FIGURE 4 A

NSC34 Cells  
+DTT



**FIGURE 4 A**

NSC34 Cells  
+DTT



Anti-CHOP.

**FIGURE 4 A**

NSC34 Cells  
+DTT

